



PAX A920

Mobile Smart Terminal

Quick Setup Guide



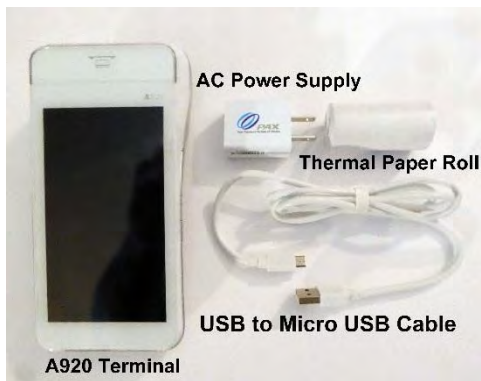
PAX A920 Mobile Terminal

Intelligence of an ECR in a handheld point of sale.

The PAX A920 is an elegantly designed compact secure portable payment terminal powered by an Android operating system. The A920 comes with a large high definition color display. A thermal printer and includes NFC contactless and electronic signature capture. Great battery life for portable use.

1 What's in The Box

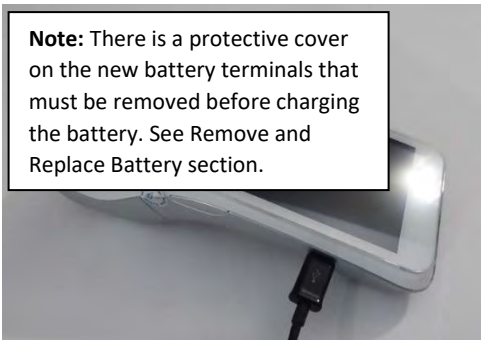
The PAX A920 includes the following items in the box.



2 A920 Charging Instructions

Before starting the A920 battery should be fully charged by plugging the USB to micro USB cord to a PC or an AC power supply and then plug the other end with the micro USB connector into the micro USB port on the left side of the terminal. Charge the battery until full.

Note: There is a protective cover on the new battery terminals that must be removed before charging the battery. See Remove and Replace Battery section.



3 A920 Buttons and Functions Front Description

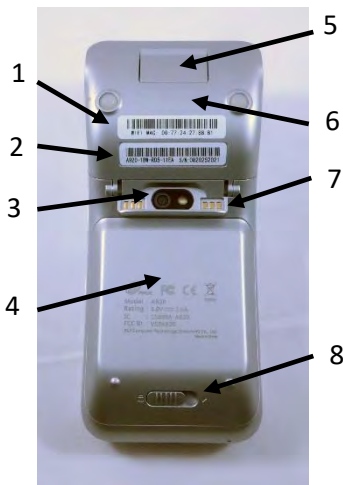


3.1 A920 Buttons and Functions

Front Description

1. MSR Card Swipe
2. Front Camera Fixed 0.3MP
3. Volume Down Button
4. Micro USB Port
5. EMV Chip Card Insert Slot
6. Contactless Card Tap
7. Volume Up Button
8. Power On/Off Button
9. 5" Capacitive Touch Screen, 1280*720

4 A920 Buttons and Functions Backside Description



4.1 A920 Buttons and Functions Backside Description

1. Wi-Fi Mac Address
2. Part Number / Serial Number
3. Rear Camera Auto Zoom 5 MP
4. Battery Cover
5. Paper Cover Latch
6. Paper Cover
7. Charging Stand Contacts
8. Battery Cover Slide Latch

5 A920 Power On/Off

Power up or power off the terminal by pressing and holding the small rectangle button on the right side of the terminal for 2-4 seconds and then release.




6 A920 Communication Setup

For the terminal to communicate with the host, other devices or to download applications the terminal communication method must be configured in advance. This document covers Wi-Fi and cellular.



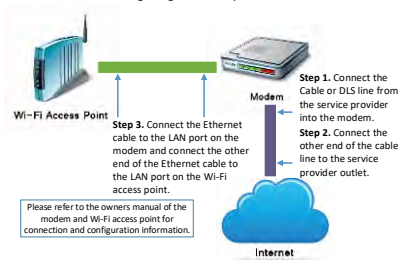
Wi-Fi to DSL or Cable Connection

 Ethernet Cable

 DSL or Cable Line



Step 4. Configure the terminal Wi-Fi settings using the terminal parameters.



6.1 A920 Wi-Fi Setup

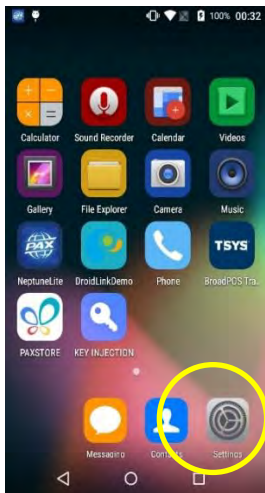
The A920 supports Wi-Fi for network and internet access. Available access types are DHCP, Static and Manual Proxy. The following instructions include setting up for each communication type.

6.1.1 Wi-Fi DHCP Setup

6.1.1.1 The Wi-Fi settings are located within the Android Settings option.

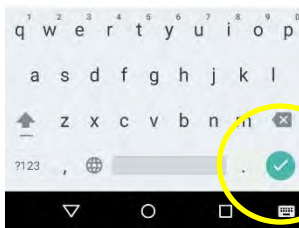
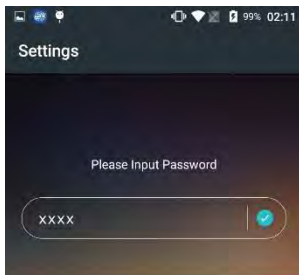
From the IDLE screen select the **Settings**

Icon.

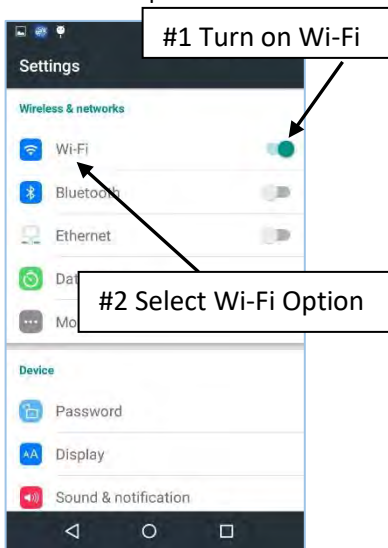


PAX A920 QUICK SETUP GUIDE

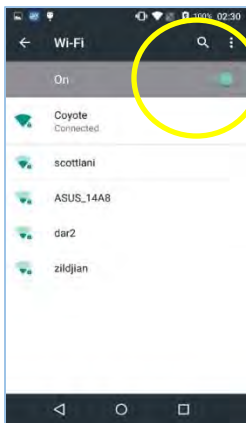
6.1.1.2 Input the Settings password and then select the green check button and then “OK”.



6.1.1.3 Turn on the Wi-Fi option. Then select the Wi-Fi option.



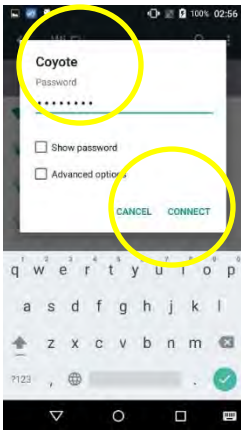
6.1.1.4 To see the available Wi-Fi networks, turn on the Local Wi-Fi option. Only local Wi-Fi networks that have the



SSID broadcast option enabled will be displayed.

To view or edit the network settings select the desired Wi-Fi network.

6.1.1.5 After selecting the desired Wi-Fi network, input the Wi-Fi case sensitive password and select “Connect”.



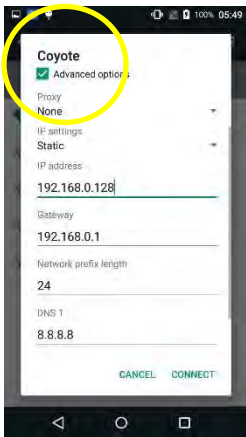
When the terminal has successfully connected to the Wi-Fi access point the Status will display “Connected”.

Select the back icon to return to the Settings menu or to exit.

6.1.2 Wi-Fi Static Setup

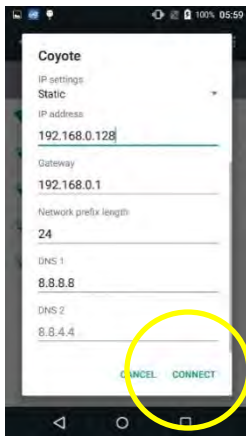
To setup Wi-Fi Static perform steps 6.1.1.1 to 6.1.1.4. Then go to step 6.1.2.1.

6.1.2.1 Top half of the screen. Select the desired Wi-Fi network and input the Wi-Fi



case sensitive password. Then select the **Advanced options**. In the **IP settings** select the Static option. In the **IP address** enter the static IP address.

6.1.2.2 Bottom half of the screen. After the static IP address is entered then scroll the page up. In the **Gateway** section enter the gateway address. Next in the **Network**



prefix length

enter the network length. In the

DNS 1 section enter the DNS 1 IP address. In the

DNS 2 section enter the DNS 2 IP address. To save

settings and exit select the “CONNECT”

option.

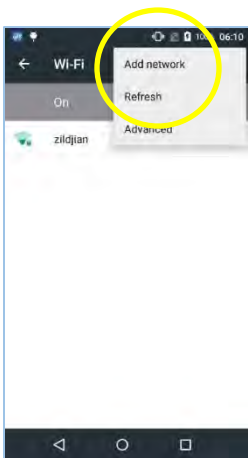
6.1.3 Wi-Fi Manual Static Setup

If the broadcast SSID is disabled on the access point the terminal will not display the SSID on the available Wi-Fi network listings. It will be necessary to manually configure the terminal for Static connection types.

To setup Wi-Fi Manual Static perform steps 6.1.1.1 to 6.1.1.4. Then go to step 6.1.3.1.

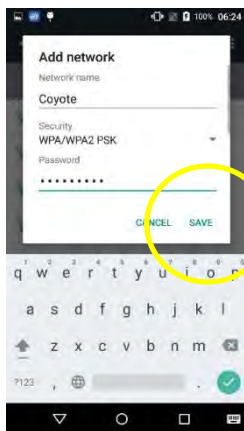
6.1.3.1 If the desired Wi-Fi network is not displayed it will be necessary to manually configure the network. In the upper right-hand corner select the options three dots icon. Then select the “Add network”

option.

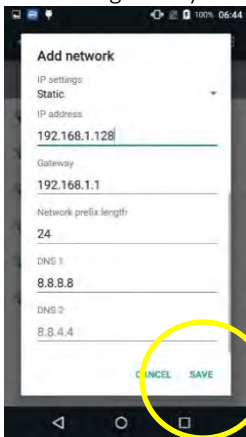


6.1.3.2 Upper half of the screen. The Add Network pop up screen will display. Enter the case sensitive Wi-Fi network SSID. Next select the security type from the drop-down menu. Now enter the case sensitive

Wi-Fi network password. Next select **“Save”** to save the settings.



6.1.3.3 **Bottom half of screen.** Scroll the screen up screen towards the top. Select the **IP settings** and then choose Static from the drop-down menu. In the **IP address** field enter the IP address. In the **Gateway** section enter the gateway address. Next in the

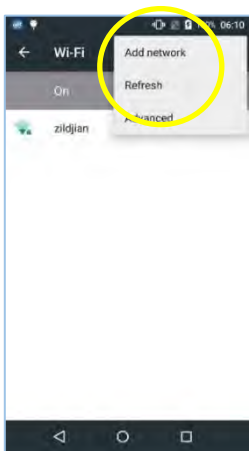


Network prefix length enter the network length. In the **DNS 1** section enter the DNS 1 IP address. In the **DNS 2** section enter the DNS 2 IP address. Next select “**SAVE**” to save the settings.

6.1.4 Wi-Fi Proxy Setup

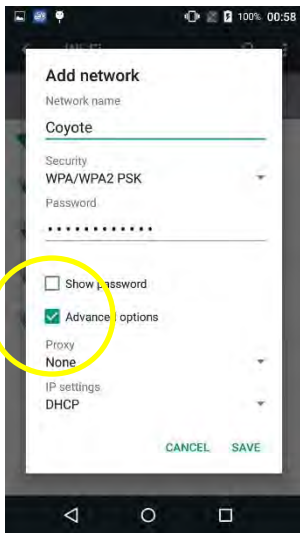
To setup Wi-Fi Proxy perform all the steps in 6.1.1.1 to 6.1.1.4. Then go to step 6.1.4.1.

6.1.4.1 To manually configure the



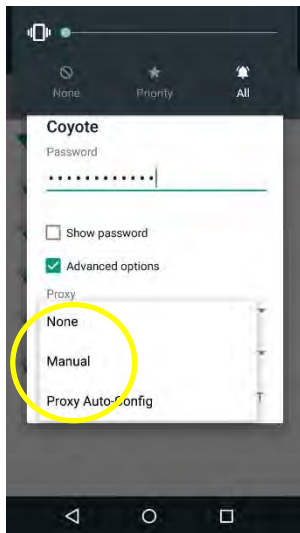
network. In the upper right-hand corner select the **options three dots icon**. Then select the **“Add network”** option.

6.1.4.2 The Add Network pop up screen will display. Enter the case sensitive **Wi-Fi network SSID**. Next select the **security**

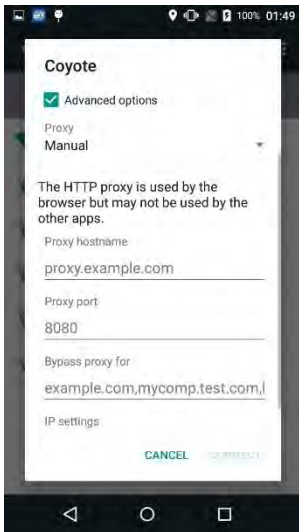


type from the drop-down menu. Now enter the case sensitive **Wi-Fi network password**. Next select the “**Show advanced options**”.

6.1.4.3 Select the Proxy drop down menu and select the **Manual** option.

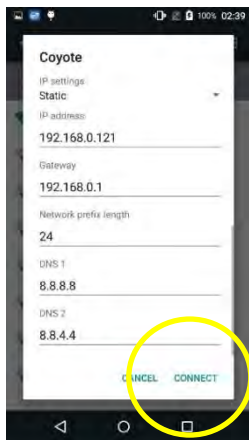


6.1.4.4 To scroll the screen up or down place finger onto screen and slide the screen towards the top or bottom. In the



Proxy hostname section enter the proxy host name. Then in the **Proxy port** section enter the proxy port number. *If there is a **Bypass for proxy** value,* then enter the bypass proxy information.

6.1.4.5 Next select the **IP setting** and then choose **Static** from the drop-down menu. In the **IP address** field enter the IP address. In the **Gateway** section enter the gateway



address. In the **Network prefix length** enter the network length. In the **DNS 1** section enter the DNS 1 IP address. In the **DNS 2** section enter the DNS 2 IP address. To **save settings** select “CONNECT”.

7 Cellular Communications

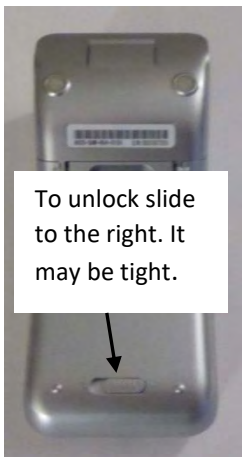
The A920 supports cellular communications. An AT&T® or T-Mobile® SIM card is needed to support cellular. This section is dedicated to the SIM card installation and cellular use. The terminal may come with the SIM card already installed and ready for use when you receive your terminal.

For the terminal to communicate with the host or to download applications the terminal communication method should be configured in advance.

Please consult with AT&T regarding settings and configuration questions.

7.1 Installing a SIM card.

The cellular SIM card should be installed before using cellular communications. The Standard size SIM card size is 25mm (0.984252") x 15mm (0.590551").



7.1.1 Turn off the terminal. Turn the terminal upside down and remove the battery cover plate. To remove the battery cover plate, slide the switch to the right. The switch will be tight. Lift the cover from the bottom and then pull up.

7.1.2 Remove the battery. Lift the battery from the bottom upwards and towards the bottom and pull out.



7.1.3 SIM card installation. After the battery is removed the SIM card can be installed. There is 1 SIM and 2 SAM card slots. Locate the SIM slot and insert the SIM card into the slot.



7.1.4 Reinstall battery.

Insert the top of the battery first and then lower the back of the battery into the terminal. Next re-install the battery cover by inserting the top first and lowering the back side down. Once the lid is in place slide the lock to the left.

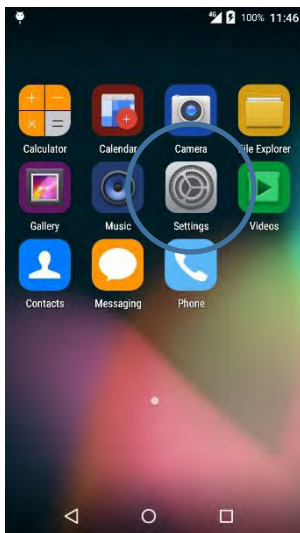


7.1.5 Next re-install the battery cover by inserting the top first and then lowering the back side down. Once the lid is in place slide the lock to the left. The slide should be tight.

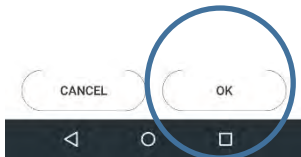
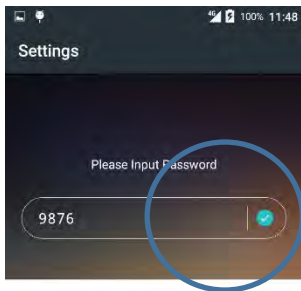


PAX A920 QUICK SETUP GUIDE

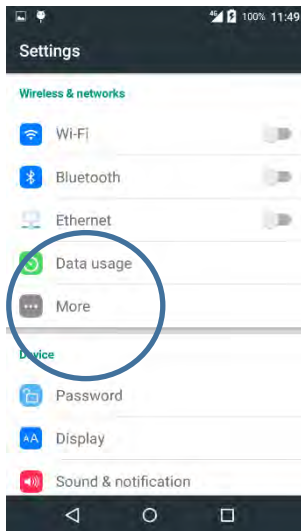
7.1.6 Power on the terminal. When it is finished powering up it will be on the IDLE screen. Select the “Settings”.



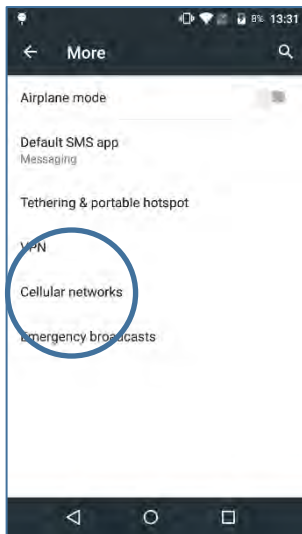
7.1.7 Enter the password **9876**, then select the **green check mark**, then the **[OK]** button.



7.1.8 Select **[More]** and then select Cellular Networks to configure the cellular network.



7.1.9 Select **[Cellular Networks]**



7.1.10 Turn on the **[Data enable]** option. Use the back arrow to exit out to the main screen. End.



8 How to Change the Paper Roll

8.1 To remove and replace the thermal paper roll turn the terminal over. Then near the top back side of the terminal place your finger under the paper lid release lever and pull the entire lid assembly away from the terminal. To remove the paper, roll simply pull the paper roll out.



8.2 To install a new thermal paper roll drop in the paper roll with the paper pulling from the back and out the top of the roll. Pull about 2" of paper out and close the lid until the lid snaps into place.

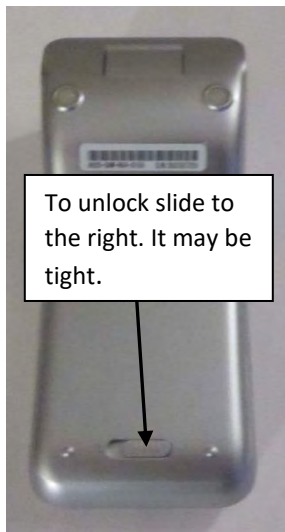


8.3 It is important the lid is fully closed so that the paper roll fully engages the paper. Tear off any excess paper.



9 Remove and Replace Battery

9.1 To remove and replace the battery position the A920 to show the backside of the terminal.



the terminal. Next locate battery cover and slide the open/close slide switch to the right. The slide switch is a tight fit. Then lift the battery cover from the base and pivot the lid upwards and remove.

9.2 Next lift the battery from the bottom side and swing it upwards from the bottom and pull out.

To install a battery first remove the protective cover over the battery connectors. Then insert the battery with the gold connectors towards the top right side. Slide the battery upwards and then carefully push the bottom into place. Next insert the top of the battery lid into the lid hinges and then lower the bottom of the lid cover until it is flush with the case. Next slide the lid switch to the left. The slide switch maybe tight.

PAX A920 QUICK SETUP GUIDE



2018000702 v1.8

45

PAX Technology®

Customer Support support@pax.us

(877) 859-0099

www.pax.us

FCC Regulations

This device complies with part 15 of the FCC Rules. Operation is subject to the following two conditions: (1) This device may not cause harmful interference and (2) this device must accept any interference received, including interference that may cause undesired operation.

This equipment complies with Part 68 of the FCC rules and the requirements adopted by the ACTA. On the body of this equipment is a label that contains among other information a product identifier. If requested, this number must be provided to the telephone company.

RF Exposure Information

This device meets the government's requirement for exposure to radio waves. This device is designed and manufactured not to exceed the emission limits for exposure to radio frequency (RF) energy set by the Federal Communications Commission of the U.S. Government.

PAX Customer Support

For questions or help with the terminal installation please contact your service provider or PAX customer support.

PAX Technology Inc.

E. support@pax.us

T. (877) 859-0099

W. www.pax.us

This document is provided to you for informational purposes only. All features and specifications are subject to change without notice.

PAX are either trademarks or registered trademarks of PAX Technology Limited in China and/or other countries.

All other trademarks or brand names are the properties of their respective holders. Copyright 2016, PAX Technology Limited, All Rights Reserved.